



☎ 0086-731-81800886 (内贸 / Domestic) / 0086-731-85853118 (外贸 / International)

🌐 www.wontechgroup.com / ✉ info@wontechgroup.com / 📠 0086-731-81800886

📍 湖南省宁乡经济技术开发区车站路 / Railway Station Road, Ningxiang National Economic Development Zone, Changsha, Hunan, P.R.China

长沙万钛工程机械有限公司
CHANGSHA WONTECH ENGINEERING MACHINERY CO.,LTD



PRODUCT CATALOGUE

产品目录

偏心跟管钻具

ODEX SYSTEM 02-05

同心跟管钻具

CONCENTRIC SYSTEM 06-09

滑块钻具

BLOCK SYSTEM 10-11

旋翼钻具

WING SYSTEM 12-13

ODEX SYSTEM

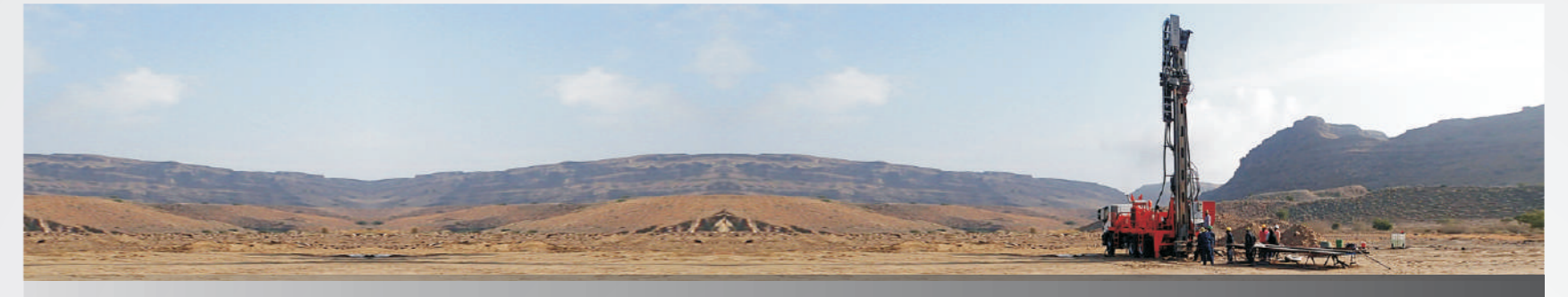
偏心跟管钻具

STRUCTURE FEATURES

结构特点

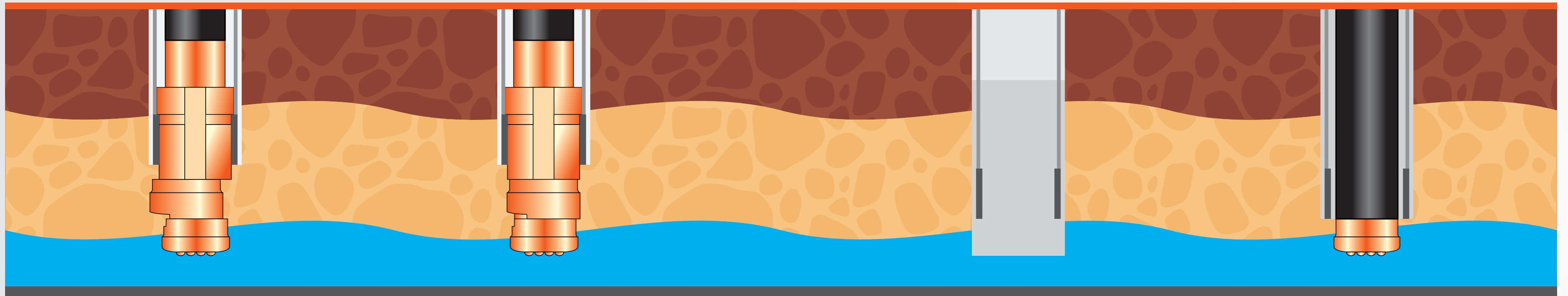
结构简单，操作方便，性能稳定可靠，钻具可回收，使用寿命长。

simple structure, easy operation, stable quality, repeatable use, and long service life.



型号 Model	A 跟管外径 O.D. of the Casing Tube, (mm)	B 跟管内径 I.D. of the Casing Tube, (mm)	H 跟管壁厚 Wall Thickness of the Casing Tube, (mm)	稳杆器 最大直径 Max. O.D. of Guide Device, (mm)	C 扩孔尺寸 Reamed Diameter, (mm)	D 管靴 最小内径 Min. I.D. of Casing Shoe, (mm)	可通过 常规钻头 最大直径 Max.O.D.of Conventional Bit, mm	可配冲击器型号 DTH Hammer	重量 Weight	
ODEX90	114.3	102.26	6.02	99.7	123	91.3	90	COP34/DHD3.5	12.5	
ODEX115	141.3	128.2	6.55	123.4	152	117	115	COP44/DHD340 SD4/QL40	22	
ODEX140	168	155	6.5	153.5	184	142	140	COP54/DHD350 M50/SD5/QL50	38	
ODEX165	194	181	6.5	179	209	167	165	COP64/DHD360 M60/SD6/QL60	62	
ODEX190	219.1	202.74	8.18	204.7	237	192.3	190	COP64/DHD360 M60/SD6/QL60	84	
ODEX240	273	254.46	9.27	252.8	307	241	240	COP84/DHD380 SD8/QL80	136	
ODEX280	325	300	12.5	298	350	282	280	DHD112	184	

其他尾柄可按照客户要求定制 Other shank is available upon customer request



01

凿岩开始时，扩孔套旋开，成孔范围扩大，带动管靴和跟管向下跟进。

When drilling starts, the ODEX reamer swings out and reams the pilot-hole wide enough for the casing tube to slide down behind the drill bit assembly.

02

当覆盖层中跟管钻进结束，小心的反转，扩孔套旋回，偏心钻具从底孔提出。

When the required depth is reached, rotation is reversed carefully, whereupon the reamer swings in, allowing the drill bit assembly to be pulled up through the casing.

03

可将跟管留在孔中，也可以一边拔管注浆从而保证孔不坍塌。

Casing tubes that are to be left in the drill hole should be sealed at the bottom of the hole by means of cement grout or some other sealing agent.

04

在基岩中使用常规钻头进行钻进直至达到所需的深度。
Drilling continues to the desired depth in the bedrock using a conventional drill bit.

WORK STEPS 工作步骤



CONCENTRIC SYSTEM

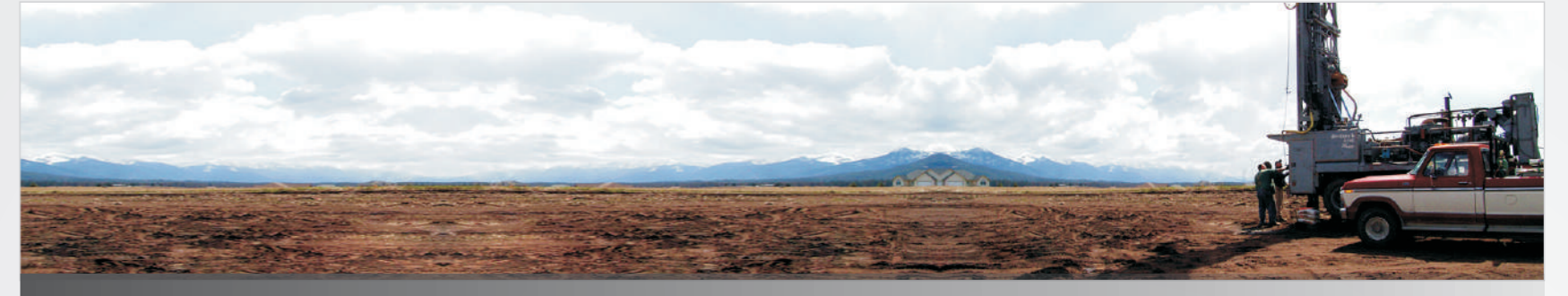
同心跟管钻具

STRUCTURE FEATURES

结构特点

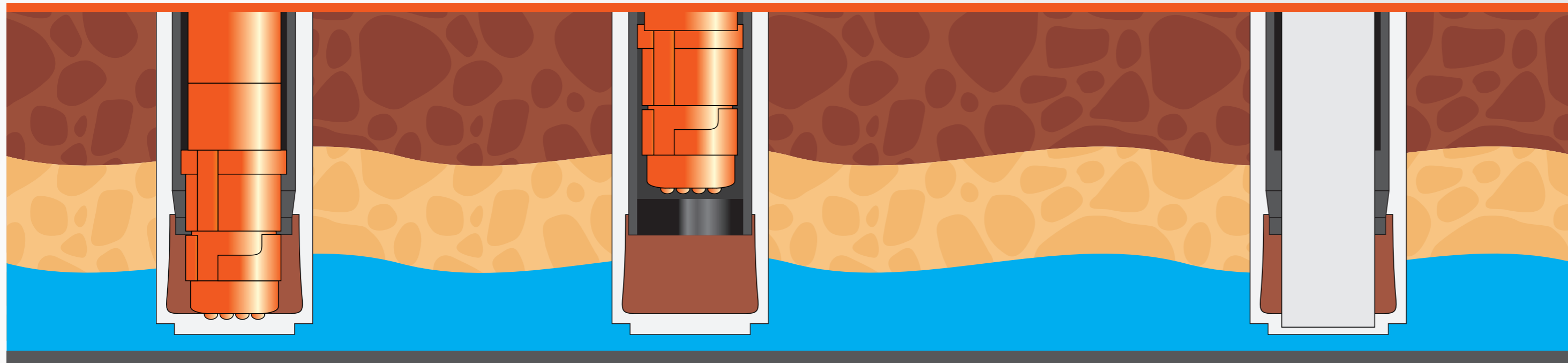
成孔直线度好，钻进速度快；钻进中扭矩较小；解锁-重新锁定比较容易；可以进行任何角度的钻孔；排渣效果好；操作容易，系统安全；经济、成本低。

fast speed in drilling vertical hole, small torque in drilling process, easy to unlock and chuck the system, be able to drill from all-direction with easy flushing, safe and easy to operate it with lost cost.



型号 Model	款式 Design	中心钻头 外径 O.D. of Pilot Bit (mm)	中心钻头 重量 W.T. of Pilot Bit (Kg)	配用冲击器系列 DTH Hammer	跟管外径 O.D. of Casing Tube (mm)	跟管 最大壁厚 Max. Thickness of Casing Tube (mm)	环形钻头 内径 I.D. of Ring Bit (mm)	环形钻头 外径 O.D. of Ring Bit (mm)	重量 Weight (Kg)	
P114WD35R-82	A	92	4.6	DHD3.5	114.3	6	84	126	3.5	
P127WD35R-93A	B	105	5.5	DHD3.5	127	6	95	146	5.05	
P140WD4R-97A	B	116.5	11.35	COP44/DHD340	139.7	8	101	165	6.35	
P140WD4R-115A	B	128	13	COP44/DHD340	139.7	8	116	167	4.6	
P140TD40-115	A	128	16.2	TD40	139.7	8	116	161	4.75	
P146WD4R-110	A	124	15	COP44/DHD340	146	8	112	165	5.5	
P168WD5R-127A	B	141	21	COP54/DHD350	168.3	8	129	192	6.7	
P168WD5R-140A	B	155	22	COP54/DHD350	168.3	8	143	200	7	
P219WD6R-170A	B	191	43	COP64/DHD360	219.1	12.7	173	247	15.85	
P219WD6R-190	A	203	44.6	COP64/DHD360	219.1	12.7	192	243	11.45	
P273WD8R-219	A	241	76	COP84/DHD380	273	9.1	223.2	305	19.6	
P273WD8R-240	A	254	79.3	COP84/DHD380	273	9.1	242	303	18.35	
P325WD8R-273A	B	292	108	COP84/DHD380	323.9	9.3	276.2	350	25.5	
P324WD8R-282	A	298	110	COP84/DHD380	323.9	9.3	282	353	24.5	

其他尾柄可按照客户要求定制 Other shank is available upon customer request



01

钻孔之前，将环形钻头和管靴组件与跟管焊好，然后将中心钻头与环形钻头管靴组件锁好，中心钻头肩部与管靴啮合。当冲击器的冲击能传至中心钻头和环形钻头时开始破岩，同时带动管靴和跟管向前。

When starts drilling, weld casing tube with ring bit, then lock pilot bit with the ring bit so that the shoulder of pilot bit is perfectly matched with the casing shoe. When impact power transmits to pilot bit and ring bit, the system starts to break rock, bringing down casing tube.

02

到达基岩之后，通过反转让卡口连接解锁而取回中心钻具。环形钻头和跟管留在孔内，也可以边注浆边将跟管连同环形钻头从底部拔出。

When casing tube is installed until bedrock, reversely turn the pilot bit and pull out from the hole, keeping ring bit and casing tube stay in the hole. Anyway, the ring bit and casing tube can be pulled out from the hole if doing grouting at the same time.

03

在基岩中，如需进一步钻进，将中心钻头换成尺寸合适的常规钻头进行钻进，直至到所需的深度。

If need to drill a deeper hole when casing tube is stalled until bedrock, pull out pilot bit from the hole and change a conventional rock bit to continue to drill until desired depth is reached.

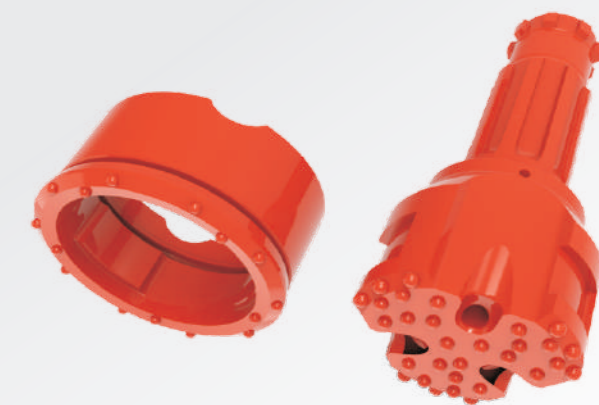
WORK STEPS 工作步骤



A style / A款

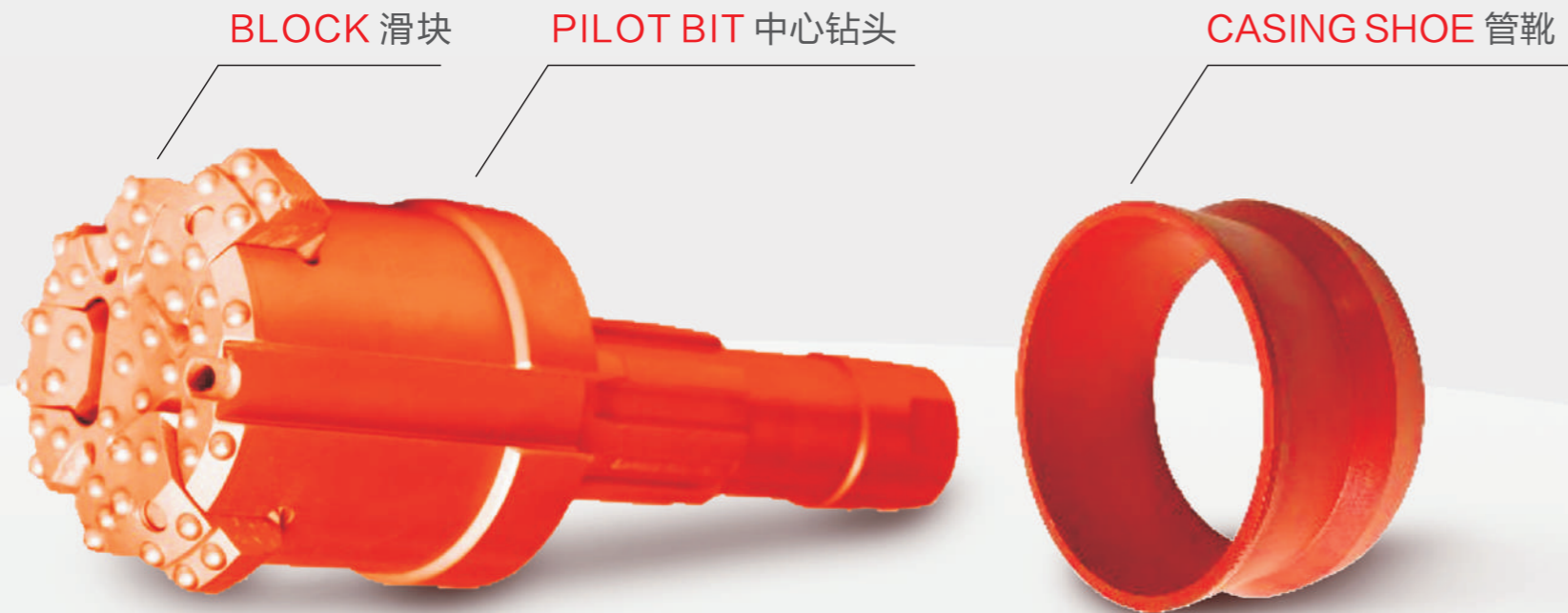


B style / B款



BLOCK SYSTEM

滑块钻具



型号 Model	A 跟管外径 O.D. of Casing Tube (mm)	B 跟管内径 I.D. of Casing Tube (mm)	H 最大壁厚 Max. Wall Thickness of Casing Tube (mm)	中心钻头 最大直径 Max. Diameter of Pilot Bit (mm)	扩孔尺寸 Reamed Diameter (mm)	D 可通过 常规钻头 最大直径 Max. O.D. of Conventional Bit (mm)	配套冲击器系列 DTH Hammer	滑块数量 Qty of Blocks, pcs	重量 Weight (Kg)	
B185	219	199	10	197	234	185	COP64/DHD360/SD6/QL60	3	61	
B210	245	225	10	222	260	210	COP84/DHD380/SD8/QL80	3	88	
B240	273	253	10	251	305	240	COP84/DHD380/SD8/QL80	3	96.5	
B282	325	305	10	302	350	282	COP84/DHD380/SD8/QL80	3	115	
B305	355	325	10	322	380	305	DHD112	4	214	
B365	406	382	12	380	432	365	DHD112	4	254	
B432	480	454.6	12.7	450	505	432	NUMA125	4	415	
B461	508	482.6	12.7	479	534	461	NUMA180	4	630	
B510	560	534.6	12.7	530	590	510	NUMA180	4	730	
B553	610	584.6	12.7	582	639	553	NUMA180	4	895	
B596	660	628	16	625	690	596	NUMA180	4	946	
B645	711	679	16	675	741	645	NUMA180	4	1010	
B694	762	730	16	726	792	694	NUMA240	4	1595	

其他尾柄可按照客户要求定制 Other shank is available upon customer request

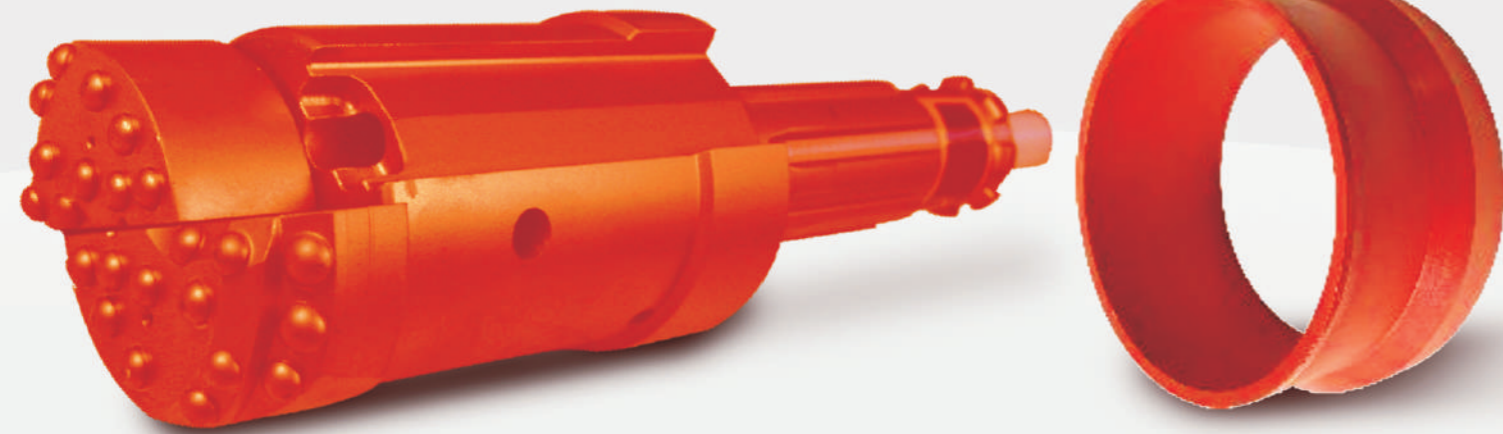
WING SYSTEM

旋翼钻具

WING 旋翼

PILOT BIT 中心钻头

CASING SHOE 管靴



型号 Model	A	B	H	扩孔尺寸 Reamed Diameter (mm)	可通过 常规钻头 最大直径 Max. O.D.of Conventional Bit (mm)	旋翼数量 Qty of Wings (pcs)	配用冲击器系列 DTH Hammer	重量 Weight (Kg)	
W90	114	101	6.5	99	125	90	2	COP34/DHD3.5	15
W117	146	126	10	124	157	117	2	COP44/DHD340/SD4/QL40	20.3
W136	168	148	10	146	180	136	2	COP54/DHD350/SD5/QL50	33.4
W142	178	158	10	154	195	142	2	COP54/DHD350/SD5/QL50	38.8
W160	194	174	10	172	206	160	2	COP54/DHD350/SD5/QL50	46.4



其他尾柄可按照客户要求定制 Other shank is available upon customer request